



Q4, 2020 – Usmate Velate (MB)

# FOCUS ON KEY FEATURES



*Stefano Enea*  
*[stefano@ad-in.net](mailto:stefano@ad-in.net)*

# UNIVIEW: TELECAMERE, DVR E NVR

The UNV logo consists of the letters 'UNV' in a bold, black, sans-serif font. A red curved line arches over the top of the 'U' and 'N'.

Focus on KEY FEATURES: Q4, 2020 – Stefano Enea

# CRESCITA, TECNOLOGIA E INNOVAZIONE



2005  
Fusione tra  
**Huawei & 3COM**  
nasce **UNV**

2011  
Investimento **Bain Capital** con oltre **\$103 milioni**

2012  
**3rd** player cinese

2017  
Importatore ufficiale  
Advanced Innovations  
**ITALIA**

2019  
**6th** a livello mondiale:  
**607 Million USD**



# POSIZIONAMENTO PRODOTTI



# UNA GAMMA COMPLETA DI TELECAMERE

## GAMMA UNV

### Key features – caratteristiche

12Mpx

UNV PRO AlphaView <sup>AI</sup>  
UNV PRO (Basic)

Deep learning, massime dimensioni dei sensori  
High-end hardware per progetti – 60 fps

8Mpx

UNV PRIME-IV <sup>AI</sup>  
UNV PRIME-III  
UNV PRIME-II  
UNV PRIME-I

Analisi video avanzata neurale, face capture, grandi sensori  
**LightHunter** (super starlight)  
Funzioni Smart, Sensori **Starlight**  
Allarmi, Suono, Motion Detection “human”

4Mpx

UNV EASY EasyStar  
UNV EASY (Basic)

Entry-level starlight, SD card, WDR  
Telecamere Entry-level - **Wifi / U-code / Long distance**



# LA GAMMA DI VIDEOREGISTRATORI

## GAMMA UNV

### Key features

16SATA

**AI** 128ch, controllo diretto dei Video-wall (decoder)  
24 input / 8 output / SFP

UNV PRO

12Mpx

RAID, failsafe, Dewarping, multiple network

UNV PRIME

**AI**

**AI: Analisi video integrate** (face, people counter, perimeter)  
Allarmi, Suono, Motion Detection "human"

8SATA

4SATA

S2 series (5Mpixel) – X series (8Mpixel)

8Mpx

UNV EASY

**Wifi / U-code / Long distance**

5Mpx



# GDPR «APPROVED»!!!



## Data protection

- Video Encryption
- Digital Signature Verify on Cloud Upgrade
- Digital Watermark
- HTTPS



## Limited Access

- IP Filtration
- ARP Protection
- Shutdown Unsafe Service/Port
- Black and white list



## Identity Authentication

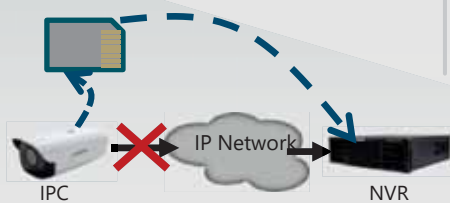
- Strong & weak Password
- 802.1x Authentication
- RTSP、Onvif、HTTP authentication
- Classification for user authentication

# SISTEMA PROFESSIONALE E POTENTE



## ANR

SD card for Edge storage  
Upload video in NVR after  
network reconnection



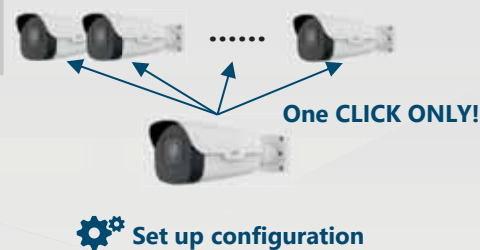
## Network disconnection detection

Detect network connection  
regularly.  
Automatically reset network  
or reset IPC once network  
disconnection detected



## One-click download/upload configuration

Quick configuration for all IP  
cameras by one-click duplicating  
uploaded parameters



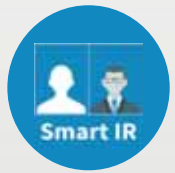
## One-click output diagnosis log

Easy to output diagnosis log  
for effective trouble shooting





# Excellent Image quality



Smart IR

LED per auto con compensazione intensità IR attiva



Smart IR OFF



Smart IR ON



# U-CODE = CODIFICA PROPRIETARIA

H.265 + U-Code = Ultra 265

↓                      ↓                      ↓

Protocollo **Standard**      Algoritmo **Innovativo**      Miglior **Compressione**





H.264

Ultra 265 **Storage-save**

Quanti hard disk servono per registrare 4-ch 2MP IPC per 3 mesi?



4T X 4



4T X 1

80%-95% Reduction in Storage

**TRE Hard Disk da 4T!**

**\$400 risparmiati !**

Calculation conditions:

Resolution	H.264	H.265	Basic Ultra 265	*Advanced Ultra 265
2MP	4Mbps	2Mbps	1.5Mbps	1Mbps
4K	8Mbps	4Mbps	3Mbps	2Mbps



Focus on KEY FEATURES: Q4, 2020 – Stefano Enea

# LIGHTHUNTER



Intelligent Algorithm U-ISP ®



Large size BSI sensor



Big iris lens

Indoor



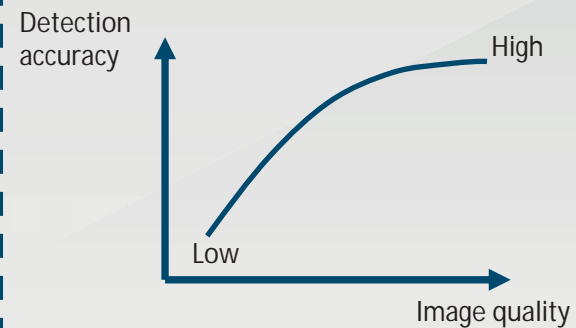
Outdoor



Traditional IPC

LightHunter IPC

## Miglioramento prestazioni analisi video



# Visione notturna (safe city)



IPC2325EBR5-DUPZ  
IR ON



IPC2325EBR5-DUPZ  
IR OFF





# Visione notturna (targhe)



IPC2325EBR5-DUPZ  
IR ON



IPC2325EBR5-DUPZ  
IR OFF



# Visione in movimento (dinamica)

UNV  
Low-blur Mode

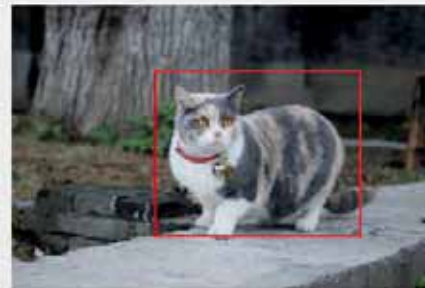
Competitor's  
Starlight



# INTELLIGENZA INTEGRATA



- **Funzioni Smart:**
  - Object detection: cross-line, intrusion
  - Tamper detection: sfuocatura e spostamento scena
  - Face detection, face recognition (**smart-bar o AI**)
- **Deep learning:** Neural filtering
- **LPR:** riconoscimento targhe
- **PTZ:** Auto tracking
- **Fisheye:** Heat-map





# GAMME PRODOTTI DEEP LEARNING - AI

**PRO**  
**ALPHAVIEW**



**High-end** flagship AI products, for industry market .



**PRIME-IV**  
**DEEPSIGHT**



**Middle-end** AI products, for industry market and SMB market.



**PRIME-II**  
**ACCUSIGHT**



**Economical** AI products, for SMB market.



# Algoritmi di apprendimento scena (deep learning)



**Video  
Metadata**

**Face  
Recognition**



**Deep  
Learning**

**People  
Counting**

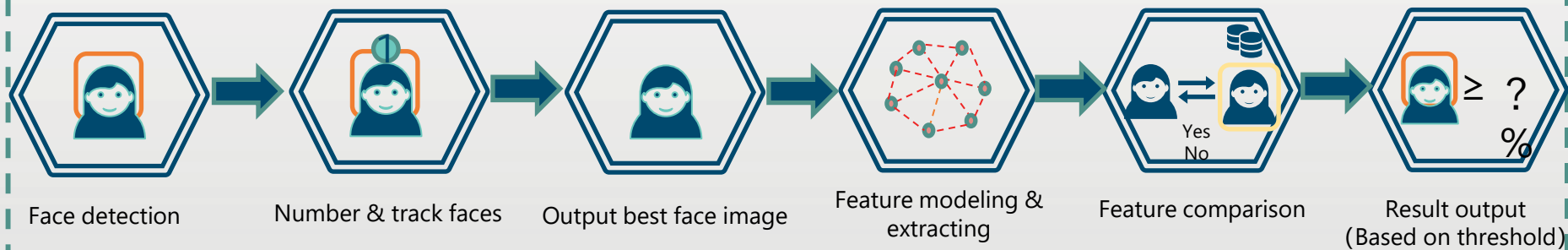
**Face  
Capture**



**Smart  
intrusion  
prevention**



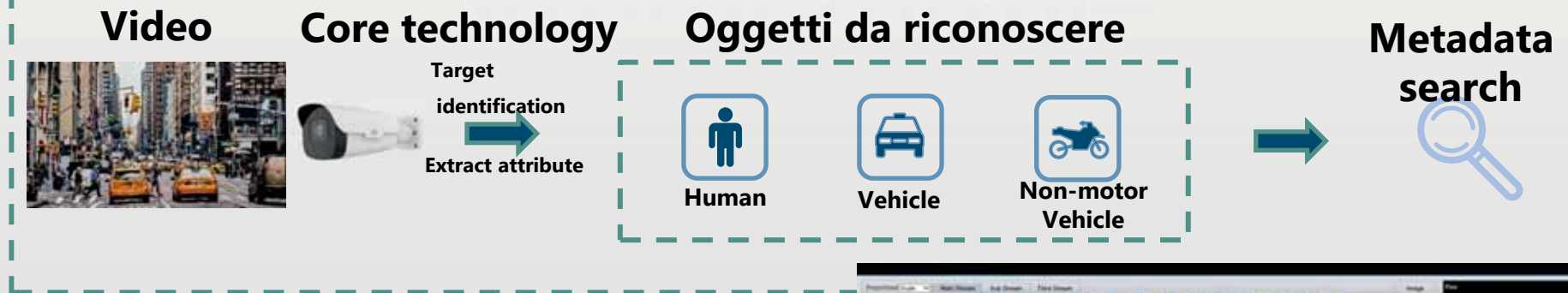
## Face recognition operation process



Accuracy  $\geq$  99%  
Facial point = 68 points  
Storage capacity = 10.000 images

# Utilizzo dei metadata per riconoscimento oggetti

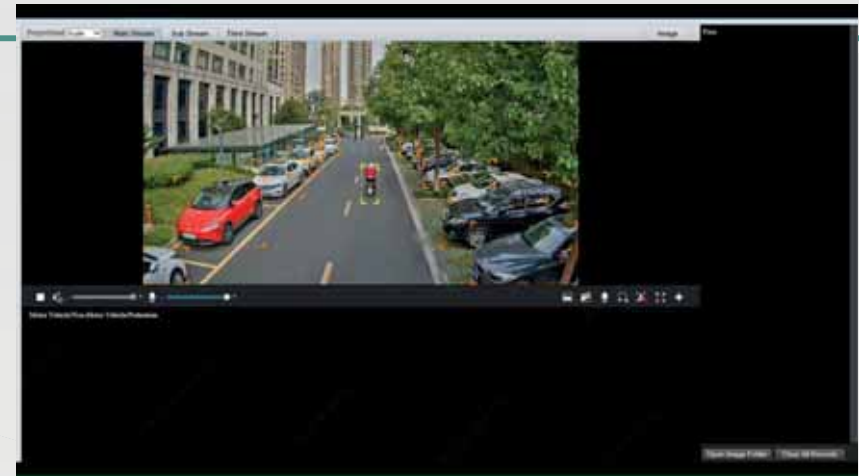
## Video metadata operation process



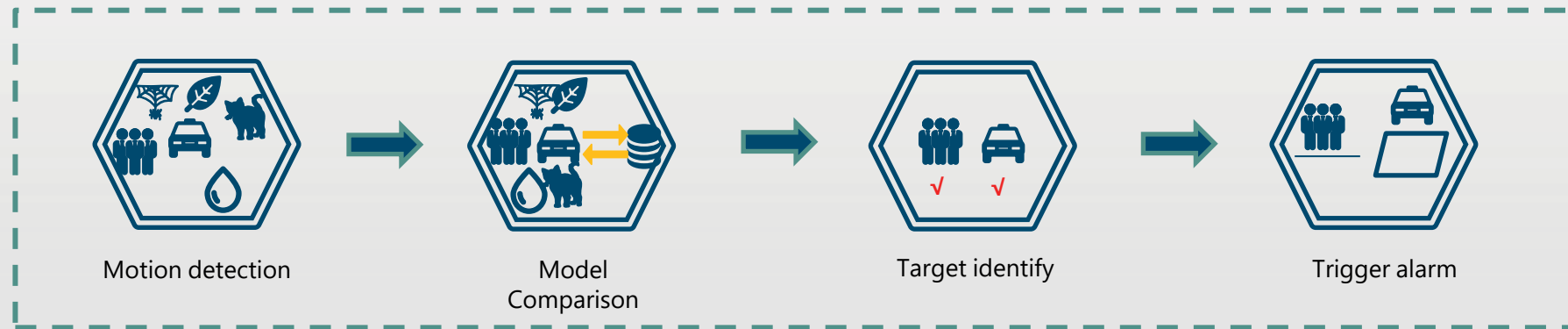
Accuracy  $\geq$  98% (Day time)

Accuracy  $\geq$  95% (Night time)

Detection quantity  $\geq$  48

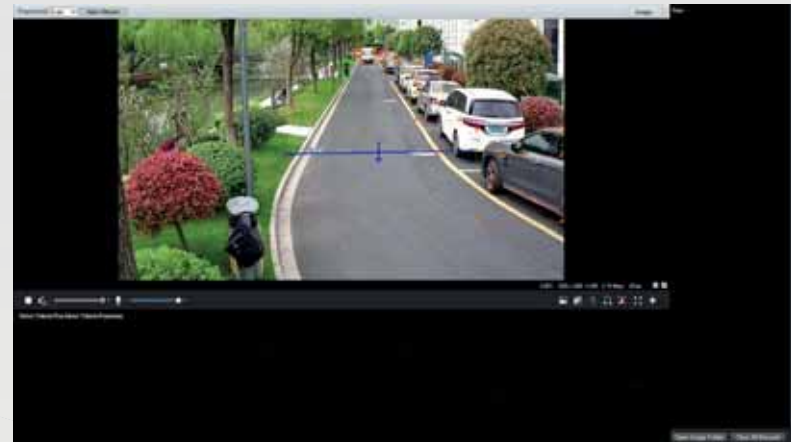


# Rivelazione smart intrusione

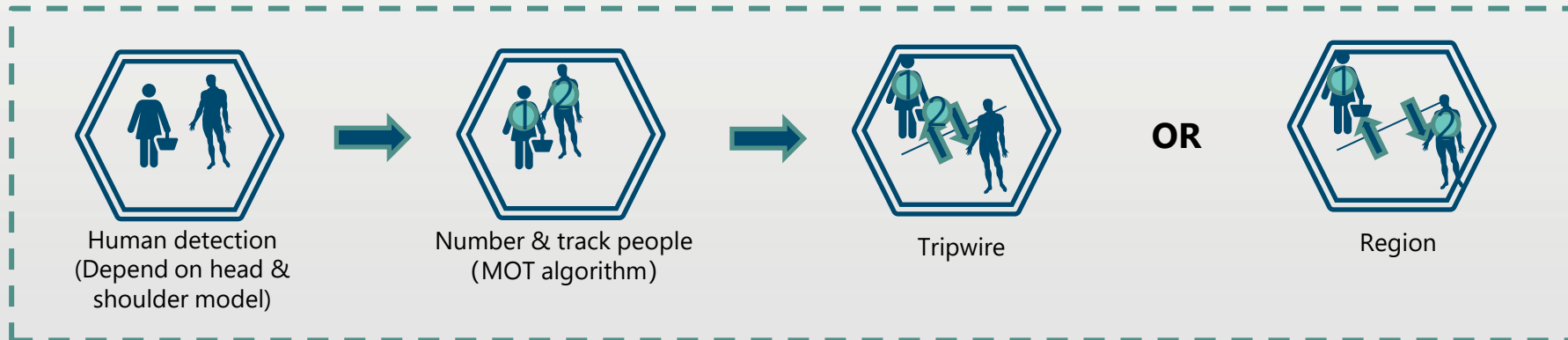


## Benefits of UNV SIP

Accuracy	$\geq$	99%
Error detection accuracy	$\leq$	1%
Detection classification	$=$	Human Vehicle Non-motor vehicle



# Conteggio persone



## Precisione conteggio

### Tripwire

Accuracy  $\geq$  95%

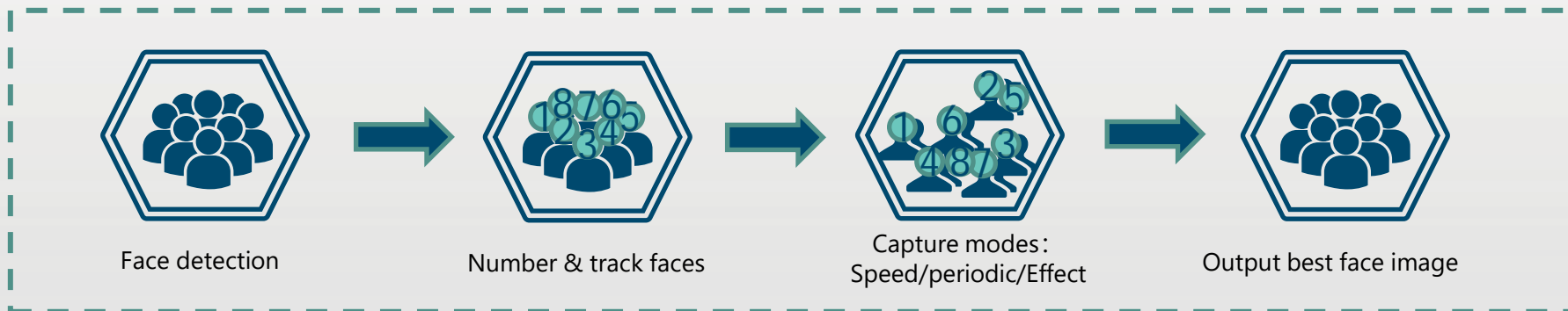
### Region

Accuracy  $\geq$  90%

Maximum = 40

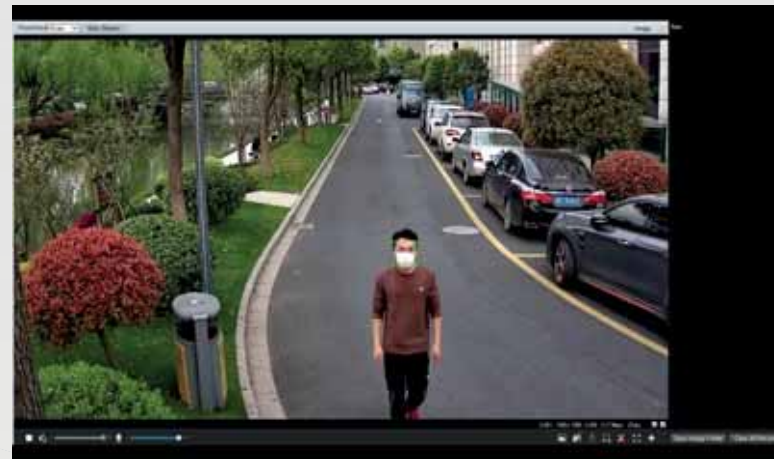


# Cattura del volto (migliore)



## Prestazioni

Accuracy	≥	98%
Capture ability	=	40 (Detect)
	=	15 (capture)







# Serie Pro

---

Pro | Pro Basic



# Serie PRO | Alphaview Products

ALPHAVIEW



IPC264EA-HDZK



IPC3234EA-HDZK

IPC268EA-DZK

IPC3238EA-DZK



- 8MP@30fps, 4MP@60fps
- 1/1.8" progressive scan CMOS, F1.2 big iris lens
- 120dB true WDR
- Alarm I/O, Audio I/O
- LightHunter (0.0005Lux)
- IP67, IK10, Surging prevention: 6KV

**Vari-focal**



IPC252ERA-X22DUG  
IPC252ERA-X22DUP



IPC262ER9-X10DU



IPC262EFW-DUZ



IPC562E-DUG

**Panoramic camera**



IPC868ER-VF18-B



IPC8542ER5-DUP



Large target surface  
and aperture



Rich tail  
line interface



Lighthunter



VCA



Edge Storage



WDR



6kv



IP 67



IK 10



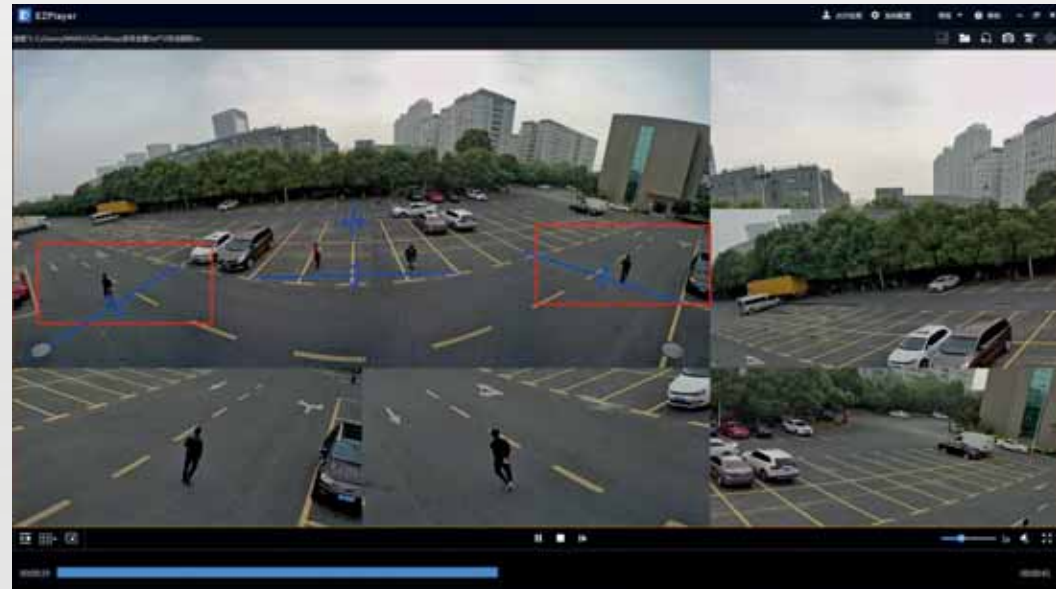
Ultra  
H.265



# Omniview Camera (Serie Pro)

5ePTZ Video

IPC8542ER5-DUP



- 180° panoramic view
- 1/1.8" Sony Big size sensor to get more light in
- 120dB WDR
- 4096 × 1800 @30fps
- Ultra SMART VCA



Focus on KEY FEATURES: Q4, 2020 – Stefano Enea

# 4K Fisheye (Serie Pro)

IPC868ER-VF18-B



## Three installation method



Top mounting

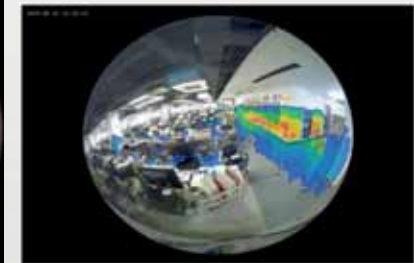


Wall mounting



Desktop mounting

## Heatmap



□ 12MP(4000 × 3000) @ 15fps

## Three display modes



Original image



Original image + 4PTZ



Panoramic image



# Serie Prime

Prime I | Prime II | Prime III | Prime IV

# Serie Prime IV | Deeplearning



- 2MP@30fps, 4MP@30fps, 5MP@30fps
- 120dB true WDR
- Alarm I/O, Audio I/O
- LightHunter (0.0005Lux)
- Built-in SD card slot
- IP67, IK10, Surging prevention: 6KV



# Serie Prime III - Lighthunter

*Fixed Lens*



IPC2122SR3-UPF40-C  
IPC2122SR3-UPF60-C



IPC322ER3-DUVPF28-C  
IPC322ER3-DUVPF40-C



IPC2222ER5-DUPF40-C  
IPC2222ER5-DUPF60-C  
IPC2222EBR5-HDUPF40  
IPC2222EBR5-HDUPF60

*Vari-Focal*



IPC2322EBR5-HDUPZ  
IPC2322EBR5-DUPZ-C  
IPC2328SBR5-DPZ



IPC3232ER3-DUVZ-C  
IPC3238SR3-DVPZ



IPC3632ER3-DUPZ-C  
IPC3638SR3-DPZ



Lighthunter



Large target surface  
and aperture



Edge Storage



WDR



VCA



Alarm



IK 10



IP 67



Ultra  
H.265



Focus on KEY FEATURES: Q4, 2020 – Stefano Enea

# Serie Prime II - Starlight



## Fixed Lens



IPC2122SS-ADF28(40)KM-I0  
IPC2124SS-ADF28(40)KM-I0  
IPC2125SS-ADF28(40)KM-I0  
IPC2128SS-ADF28(40)KM-I0



IPC322SS-DF28(40)K-I0  
IPC324SS-DF28(40)K-I0  
IPC325SS-DF28(40)K-I0  
IPC328SS-DF28(40)K-I0



IPC3612SS-ADF28(40)KM-I0  
IPC3614SS-ADF28(40)KM-I0  
IPC3615SS-ADF28(40)KM-I0  
IPC3618SS-ADF28(40)KM-I0

## Vari-Focal



IPC2322SS-DZK-I0  
IPC2324SS-DZK-I0  
IPC2325SS-DZK-I0



IPC3532SS-DZK-I0  
IPC3234SS-DZK-I0  
IPC3235SS-DZK-I0



IPC3632SS-DZK-I0  
IPC3634SS-ADZK-I0  
IPC3635SS-ADZK-I0

AI



Smart Intrusion Prevention



Edge Storage



WDR

VCA



Alarm



IK 10



IP 67

Ultra H.265



Focus on KEY FEATURES: Q4, 2020 – Stefano Enea



# Serie Prime I - Funzioni I/O – Human detection

## Fixed Lens



IPC2124SR3-ADPF28M-F  
IPC2124SR3-ADPF40M-F  
IPC2125SR3-ADPF28M-F  
IPC2125SR3-ADPF40M-F



IPC324SR3-DVPF28-F  
IPC324SR3-DVPF40-F  
IPC325SR3-DVPF28-F  
IPC325SR3-DVPF40-F



IPC3614SR3-ADPF28-F  
IPC3614SR3-ADPF40-F  
IPC3615SR3-ADPF28-F  
IPC3615SR3-ADPF40-F



IPC354SR3-ADNPF28-F  
IPC354SR3-ADNPF40-F

## Vari-Focal



IPC2324SBR5-DPZ-F  
IPC2325SBR5-DPZ-F



IPC3534SR3-DVPZ-F  
IPC3535SR3-DVPZ-F  
IPC3534SR3-DVNPZ-F



IPC3634SR3-ADPZ-F  
IPC3635SR3-ADPZ-F



Intrusion detection



Human Body  
Detection



Edge Storage



WDR



Cable-free



Alarm



IK 10



IP 67



Ultra  
H.265



Focus on KEY FEATURES: Q4, 2020 – Stefano Enea



# Serie PTZ

---

# Caratteristiche comuni



## Human body detection

Enjoy false alarm reduction and focus on human body



## Auto-tracking

Control the PTZ camera track an object in motion automatically.



## LightHunter

Deliver clarity images in the low-light environment



## 2-way Talk

Built-in Mic & Speaker  
Support dual-way talk



## IP66

The camera can be widely used in outdoor environment with IP66 weatherproof design.



## WDR

Provide usable video in which both the bright and dark areas appear at the same time.

# IP66 & Audio Bidirezionale



Built-in Mic & speaker makes it easy for remote communication with people in front of the camera. With IP66 weatherproof design, it can be widely used in outdoor environment such as apartments, factories, riverside and construction site, etc.



# Performance

## Daytime



No Parking



Danger! Deep water



Once a stranger enters the view of the camera, the strobe light will be triggered and a built-in speaker plays a voice suitable for different scenes.

# Performance

## Nightly



Please be aware, you are in the monitored area



You are in the danger zone, do not approach



The active deterrence function can be triggered in IR mode especially in those areas without lights.





# Easy series

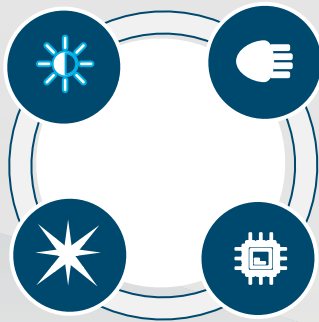
EasyStar | Easy Basic

# EasyStar Technology & Performance

## Easystar technology key features

Entry-level starlight

Min illumination:  
0.005 lux



Support up to 50M IR  
(Bullet only)

BSI sensor

## Indoor & Outdoor image performance



Traditional IPC

EasyStar IPC



Traditional IPC

EasyStar IPC

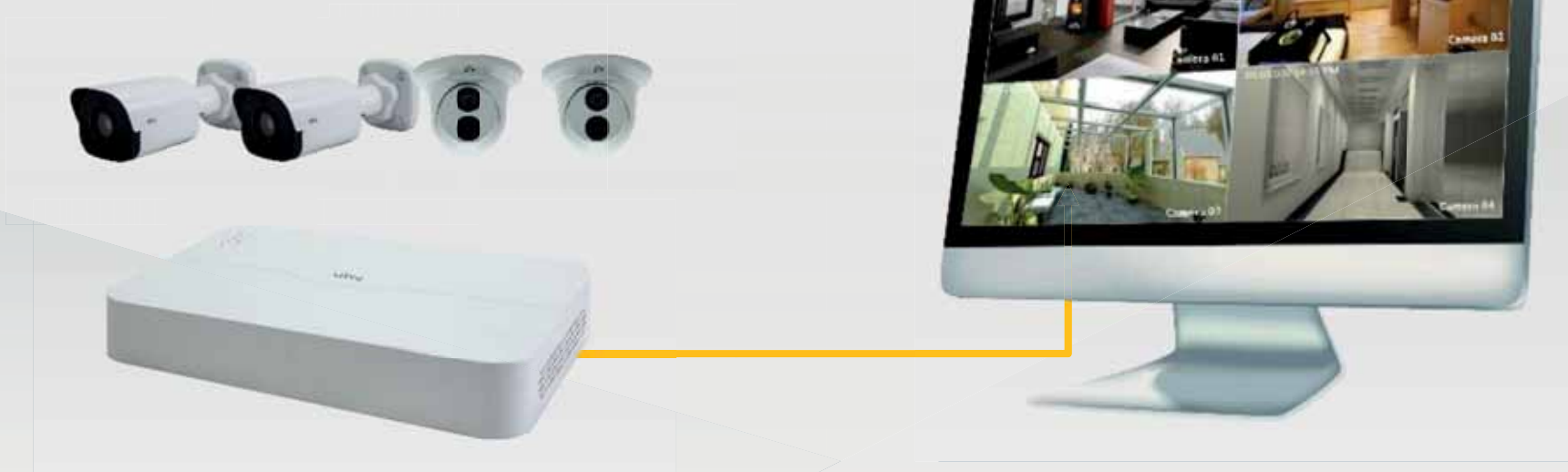


# NVR: UTILIZZO SEMPLICE E AFFIDABILE

- NVR, XVR e telecamere sono **Plug and play**
- Opzioni di configurazione multipla telecamere (web)
- Struttura pannello locale = pannello web
- Accesso remoto alle telecamere
- Upgrade software in un click, NVR e telecamere
- **Onvif member**, compatibilità Profilo S, G e T
- Dimensionamento impianto su reale capacità NVR alla massima risoluzione di registrazione

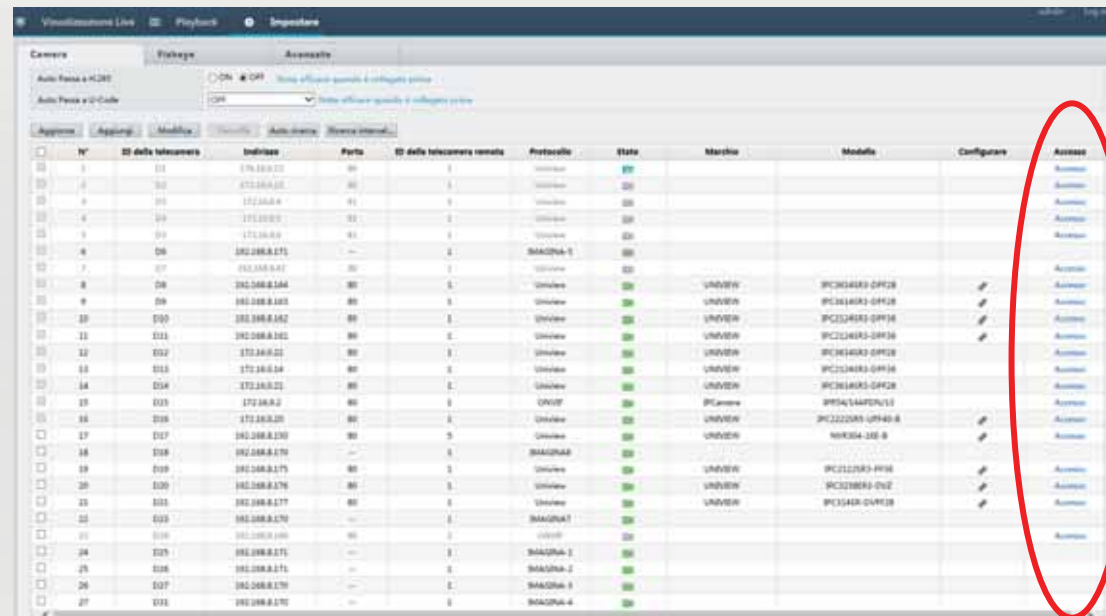
# PLUG AND PLAY

- NVR fornisce alimentazione poe+ sino a 30W
- **Assegnazione indirizzi e password**
- Menù integrati impostazioni tlc.



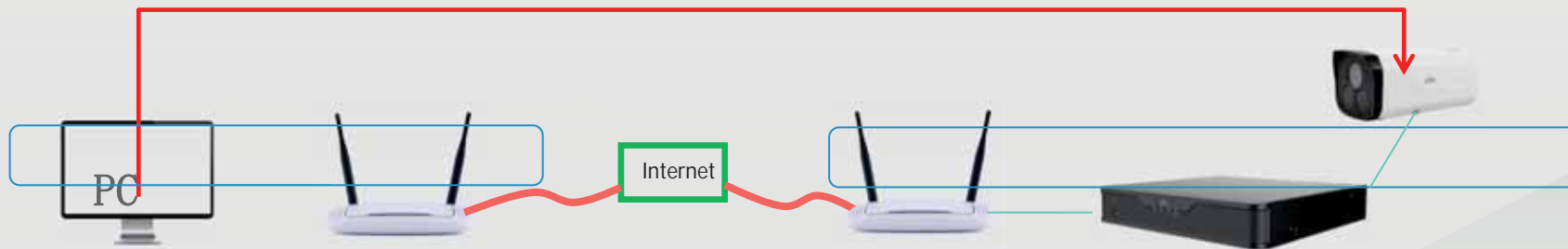
# Accesso diretto alle telecamere in rete PoE

Accesso diretto attraverso interfaccia web alle telecamere connesse all’NVR tramite le porte PoE integrate nonostante le Differenti classi IP



N°	ID della telecamera	Indirizzo	Porta	ID della telecamera remota	Protocollo	Stato	Marchio	Modello	Configurare	Accesso
1	01	172.16.0.22	80	1	Uniview	ON				Accesso
2	02	172.16.0.23	80	2	Uniview	ON				Accesso
3	03	172.16.0.24	80	3	Uniview	ON				Accesso
4	04	172.16.0.25	80	4	Uniview	ON				Accesso
5	05	172.16.0.26	80	5	Uniview	ON				Accesso
6	06	192.168.8.171	80	6	MAONIA-1	ON				Accesso
7	07	192.168.8.172	80	7	Uniview	ON				Accesso
8	08	192.168.8.184	80	8	Uniview	ON	UNIVIEW	IPC214K3-0P12		Accesso
9	09	192.168.8.185	80	9	Uniview	ON	UNIVIEW	IPC214K3-0P12		Accesso
10	010	192.168.8.182	80	10	Uniview	ON	UNIVIEW	IPC214K3-0P12		Accesso
11	011	192.168.8.181	80	11	Uniview	ON	UNIVIEW	IPC214K3-0P12		Accesso
12	012	172.16.0.21	80	12	Uniview	ON	UNIVIEW	IPC214K3-0P12		Accesso
13	013	172.16.0.24	80	13	Uniview	ON	UNIVIEW	IPC214K3-0P12		Accesso
14	014	172.16.0.21	80	14	Uniview	ON	UNIVIEW	IPC214K3-0P12		Accesso
15	015	172.16.0.2	80	15	ONVIF	ON	PCamera	IPFA144PDA115		Accesso
16	016	172.16.0.20	80	16	Uniview	ON	UNIVIEW	IPC222DAS-0P40-8		Accesso
17	017	192.168.8.130	80	17	Uniview	ON	UNIVIEW	NVR304-120-6		Accesso
18	018	192.168.8.170	80	18	MAONIA-2	ON				Accesso
19	019	192.168.8.175	80	19	Uniview	ON	UNIVIEW	IPC212K3-0P12		Accesso
20	020	192.168.8.176	80	20	Uniview	ON	UNIVIEW	IPC212K3-0P12		Accesso
21	021	192.168.8.177	80	21	Uniview	ON	UNIVIEW	IPC214K3-0P12		Accesso
22	022	192.168.8.178	80	22	MAONIA-1	ON				Accesso
23	023	192.168.8.180	80	23	Uniview	ON				Accesso
24	024	192.168.8.171	80	24	MAONIA-1	ON				Accesso
25	025	192.168.8.171	80	25	MAONIA-2	ON				Accesso
26	026	192.168.8.179	80	26	MAONIA-1	ON				Accesso
27	027	192.168.8.170	80	27	MAONIA-4	ON				Accesso

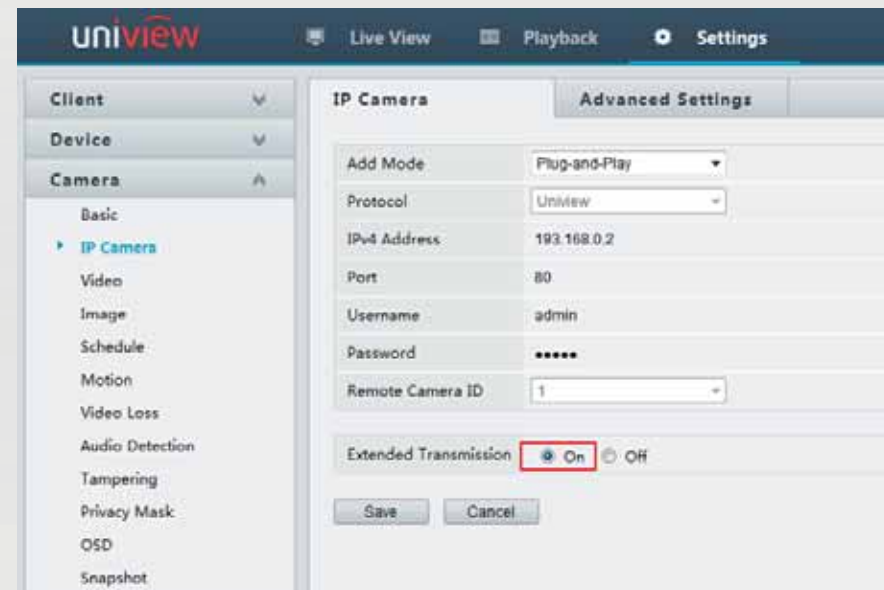
# ACCESSO REMOTO ALLA TELECAMERA



No.	Camera ID	Address	Port	Remote Camera ID	Protocol	Status	Vendor	Model	Configure	Access
1	D1 (IP Camera 01)	200.7.102.233	80	1	Uniview		UNVIEW	IPC242S-IR5-HUF60-DT		

# TECNOLOGIA LONG DISTANCE

- Estensione della distanza fino a 250m
- Cavo di rete cat 5e/6
- 10 Mbit/s full duplex



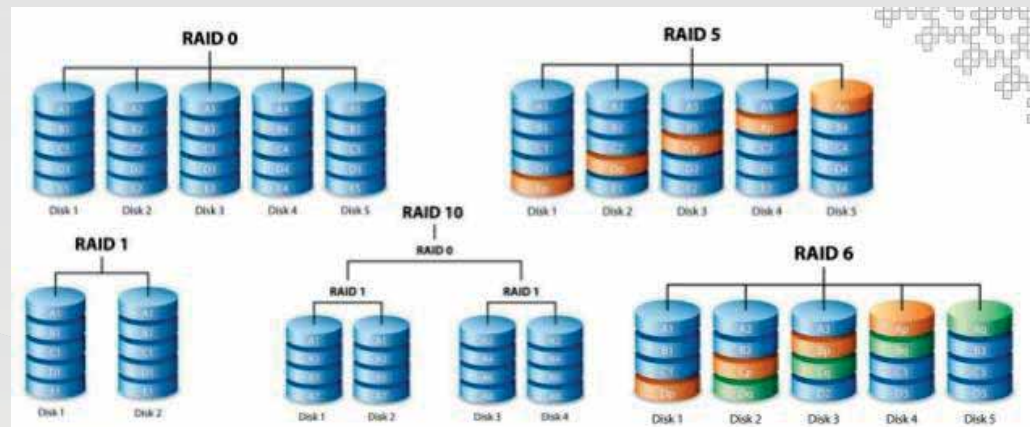
# DIMENSIONAMENTO IMPIANTO SEMPLIFICATO

- Implementazione del numero massimo di telecamere supportate dall'NVR alla massima risoluzione senza problemi di limitazione di banda o di risoluzione grazie ad un hardware sovradimensionato

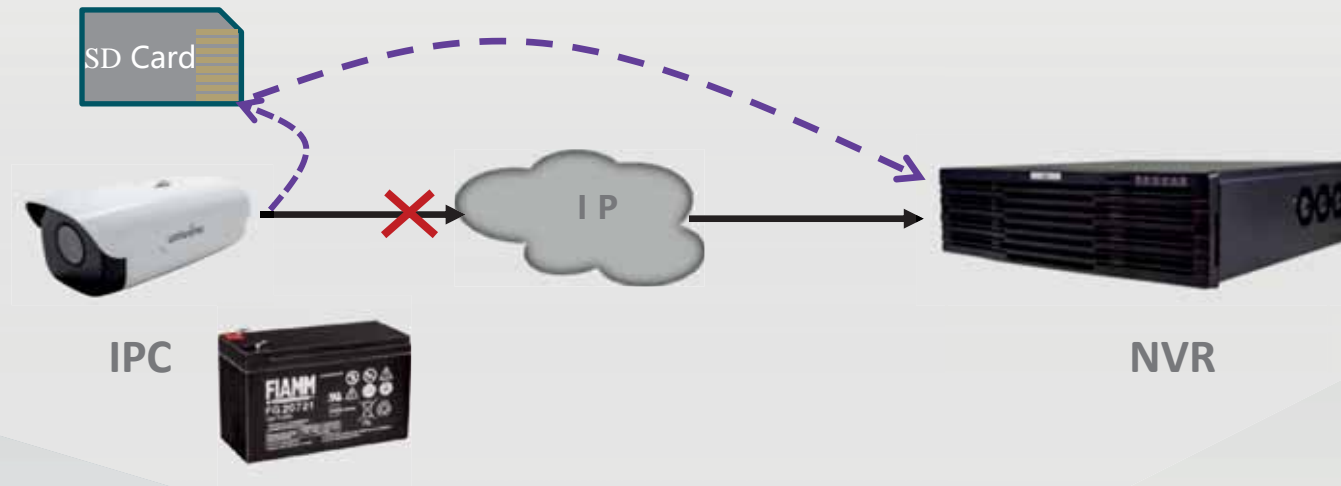


# AFFIDABILITA' REGISTRAZIONI

- ANR su tutti i modelli di telecamere con storage locale
- Mirroring interno
- Compatibilità NAS esterni + RAID
- NVR failover



# ANR (Edge storage automatico)



Quando la connessione di rete viene a interrompersi, la telecamera memorizza nella memoria **SD interna**. Il ripristino avviene automaticamente

# USCITE VIDEO PROGRAMMABILI SEPARATAMENTE (-B)

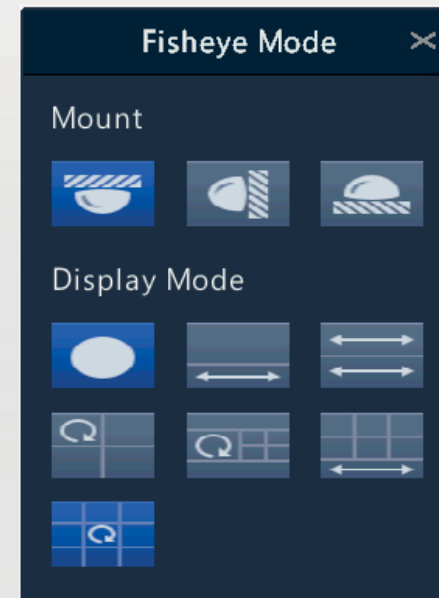
Visualizzazione live view e il playback



308B e 516)



# De-warping telecamere Fisheye (-B)



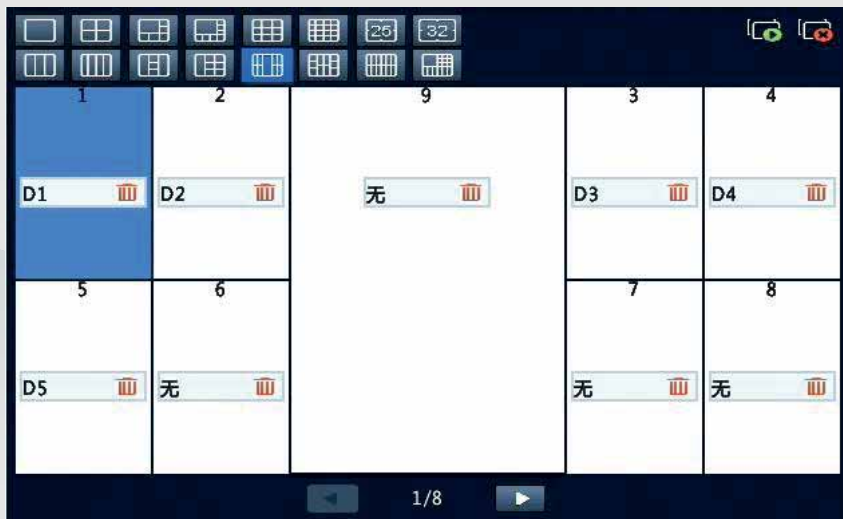
De-warping da interfaccia web su tutta la gamma

De-warping hardware con uscita monitor HDMI (modelli -B)

Modalità di visualizzazione multipla

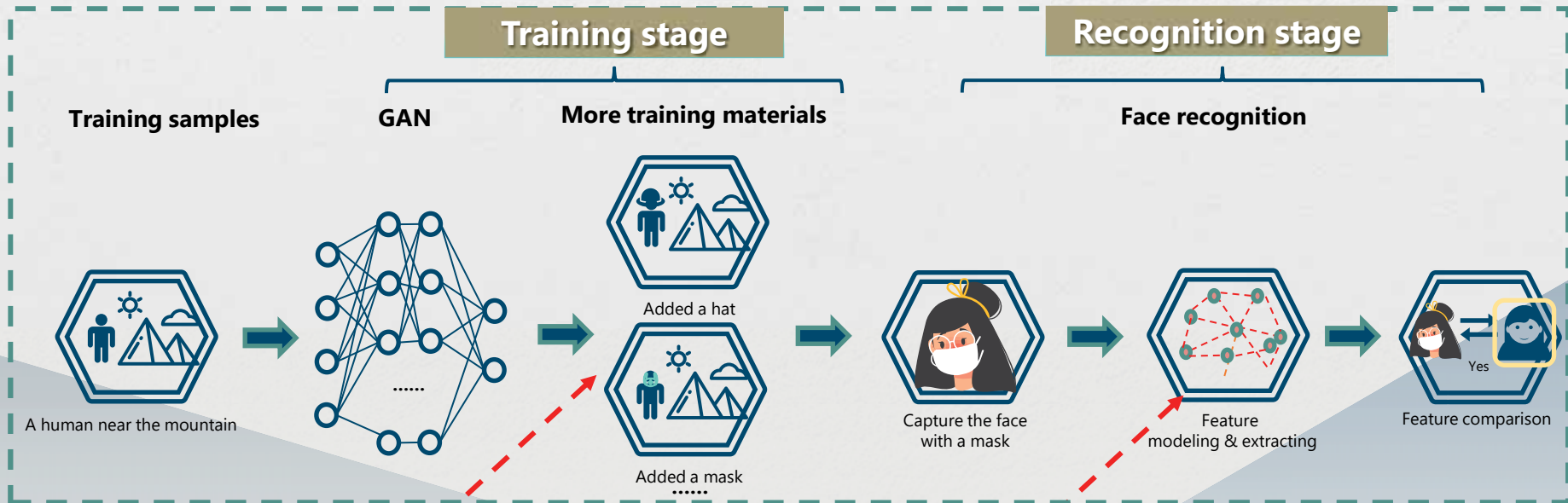
# Modalità “corridoio”

Visualizzazione di telecamere in formato verticale a 3/4/5/7/9/10/12/16/32 finestre



# Apprendimento iniziale dell'algoritmo

Through GAN and attention model to improve the accuracy of AI function in different scenes



**GAN**  
**(Generative Adversarial Network)**

Enrich the training samples  
Improve the accuracy in various scenes

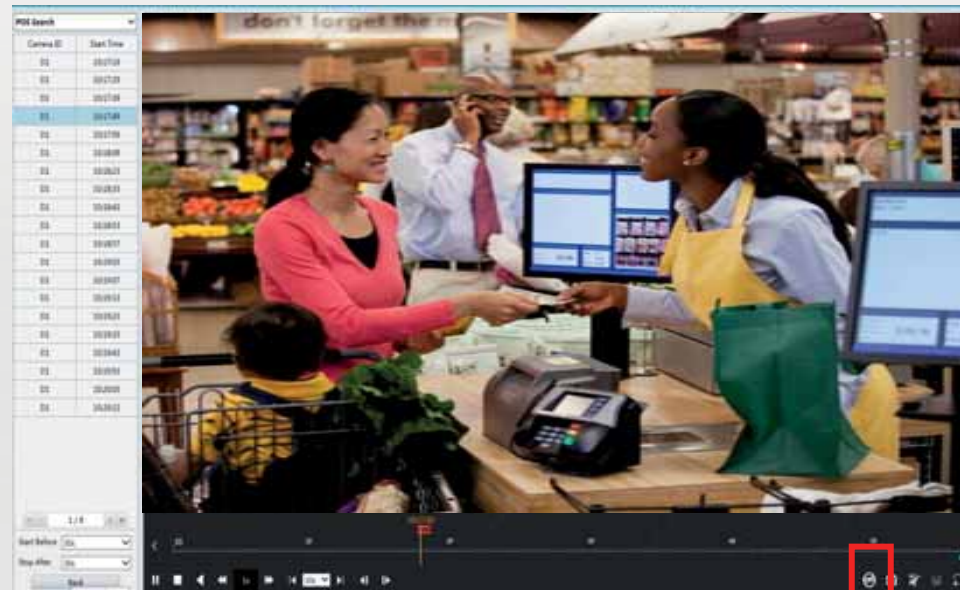


**Attention model**

Increases ROI area weight  
(face area without mask)  
Improve the accuracy in special scenes



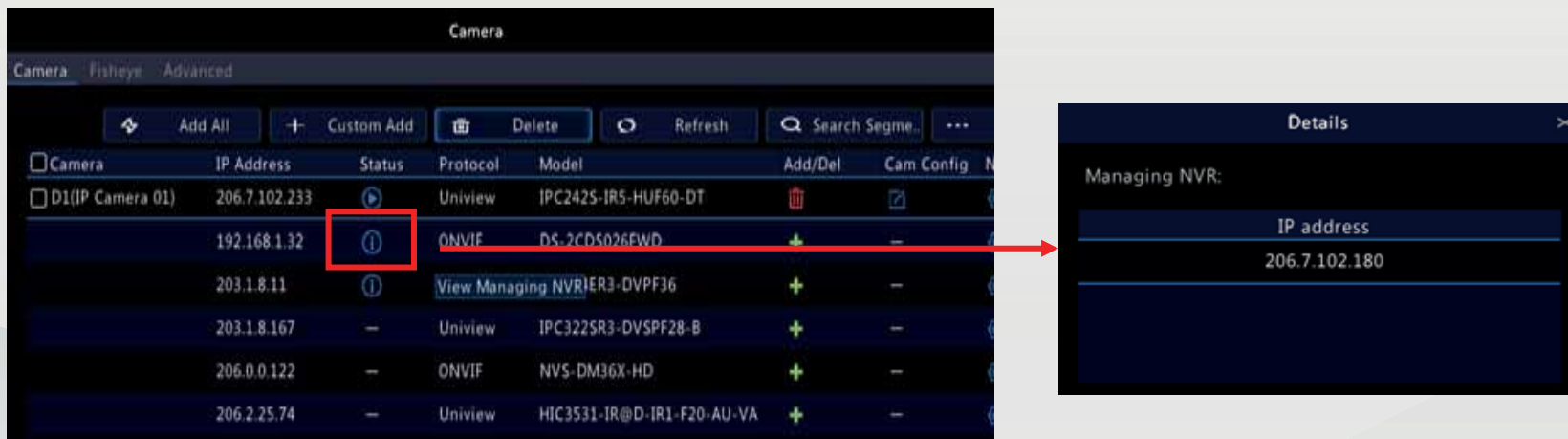
## Ricerca attiva tag da dispositivi POS



- ◆ Choose "POS Search"
- ◆ Keywords can be input to improve retrieval efficiency. Can't fuzzy search, case sensitive
- ◆ POS can be turned on/off

## Aggiunta automatica di telecamere e gestione pertinenza NVR

After an IPC has been added to one NVR, if the IPC is searched by another NVR in the same LAN searches, there will be a mark indicating that it has been added.

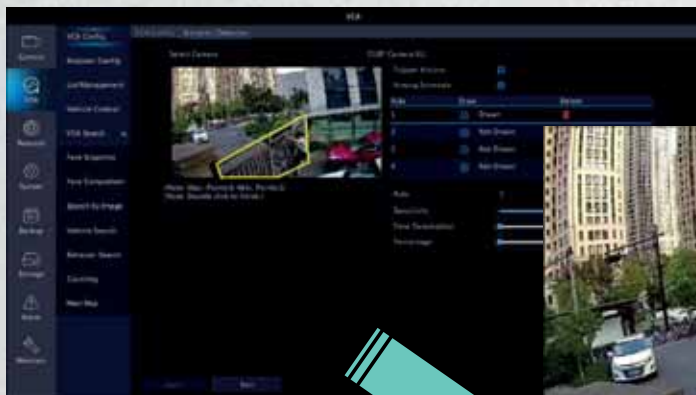


The screenshot displays a camera management interface with a table of cameras and a details window. The table has columns for Camera, IP Address, Status, Protocol, Model, Add/Del, and Cam Config. A red box highlights the status icon for the camera with IP 192.168.1.32, which is a blue circle with an 'i'. A red arrow points from this icon to the details window, which shows the IP address 206.7.102.180 under the heading 'Managing NVR:'.

Camera	IP Address	Status	Protocol	Model	Add/Del	Cam Config
D1(IP Camera 01)	206.7.102.233	🔍	Uniview	IPC242S-IR5-HUF60-DT	🗑️	📄
	192.168.1.32	📌	ONVIF	DS-2CDS026EWD	+	-
	203.1.8.11	📌	View Managing NVR	IR3-DVPP36	+	-
	203.1.8.167	-	Uniview	IPC322SR3-DVSPF28-B	+	-
	206.0.0.122	-	ONVIF	NVS-DM36X-HD	+	-
	206.2.25.74	-	Uniview	HIC3531-IR@D-IR1-F20-AU-VA	+	-

Managing NVR:  
IP address  
206.7.102.180

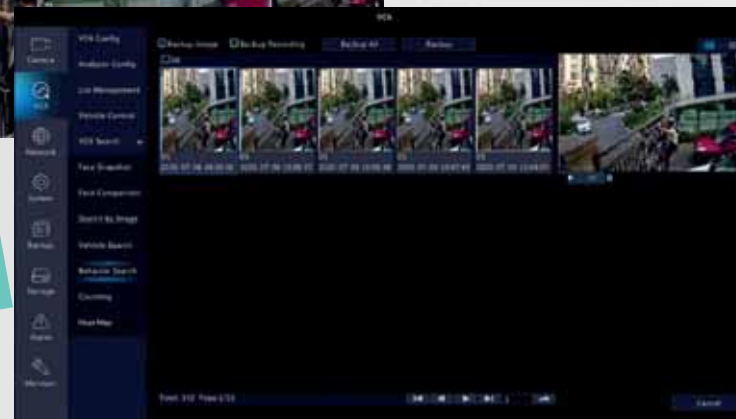
# Analisi e ricerca comportamentale



Perimeter configuration



Real-time display

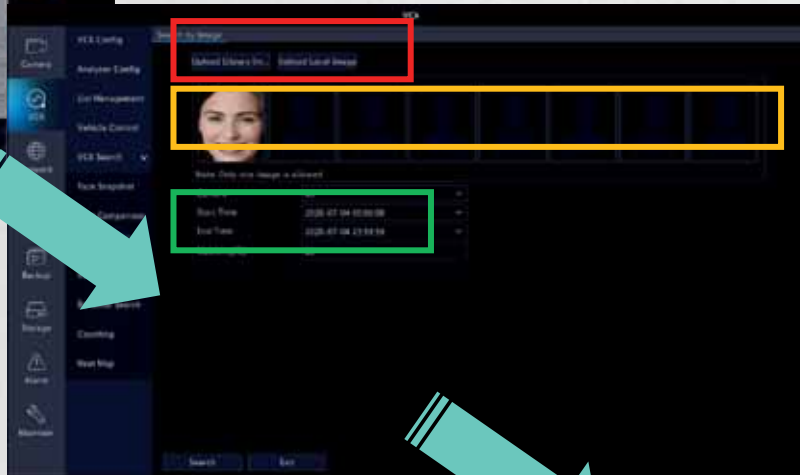


Behavior search

# Ricerca per immagine campione



Smart preview interface



Search interface



Result display

# PIATTAFORMA CLOUD

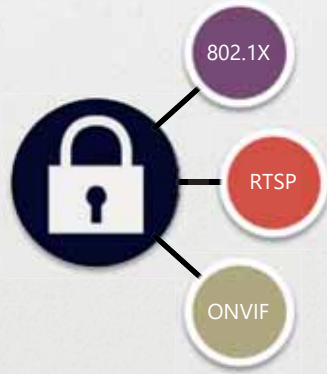
- Virtual server su piattaforma Amazon AWS
- Gestione 3° stream + Ucode
- Sharing device limitato nel tempo e nei diritti





# High Cyber Security

## Various authentications



## Illegal login protection

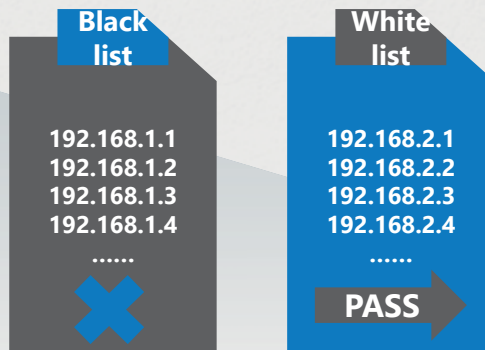


## Password security level



LAN : Weak password  
WAN : Strong password

## Black/white list



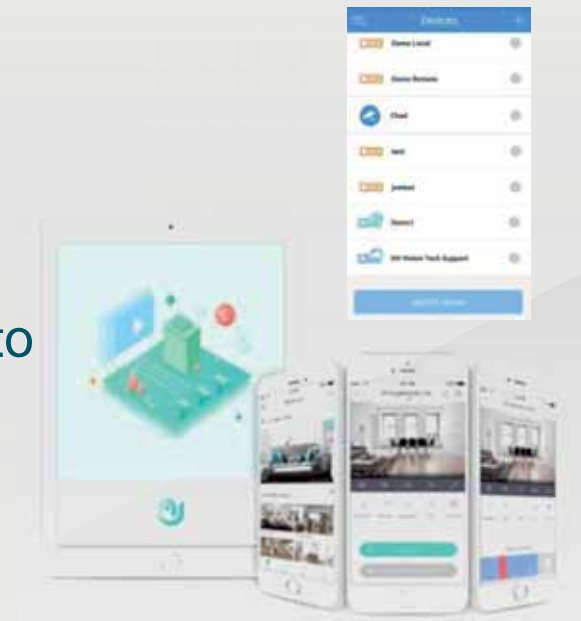
## Watermark





# APPLICAZIONI CLOUD

- Applicazioni smartphone: Ezview (int.) – Ezlive (utente)
- Applicazione PC e MAC: EZstation
- Applicazione Web
  - Recupero password cloud
  - Stato attuale connessione, IP
  - Collegamento P2P al NVR/DVR remoto





# Ezstation: Windows + Mac



**GRATUITO**



Focus on KEY FEATURES: Q4, 2020 – Stefano Enea

## Uniview: gestione account EZcloud

- [Browser: https://en.ezcloud.uniview.com](https://en.ezcloud.uniview.com)
- Accesso da mobile phone
- Gestione dispositivi, identificazione IP, stato on-line



**My Cloud Devices** 🗑️

Select	No.	Org	Device Name	Device Type	Device IP	Latest Online Time	Status	Share Device	Change Device	Retrieve Password	Access Device
<input type="checkbox"/>	1	root	salone	NVR302-16E-P16	88.149.144.66	3/28/2017 2:06:36 PM	Online(NAT)	<a href="#">Share</a>	<a href="#">Change</a>	<a href="#">Retrieve</a>	<a href="#">Access</a>

all / inverse 1 in total | ⏪ ⏩ 1 / 1 ⏪ ⏩ per page 10 ▼

# Condivisione Privata



Accesso utente personalizzato in condivisione temporanea

Welcome j02494 ▾ Exit Help

+ Add Org + Add Device

Device IP	Latest Online Time	Status	Share Device	Change Device	Retrieve Password	Access Device
1.164.52.182	2/22/2017 10:06:04 PM	Online	<a href="#">Share</a>	<a href="#">Change</a>	<a href="#">Retrieve</a>	<a href="#">Access</a>
1.164.52.172	2/22/2017 10:05:57 PM	Offline	<a href="#">Share</a>	<a href="#">Change</a>	<a href="#">Retrieve</a>	<a href="#">Access</a>
1.164.52.172	2/22/2017 10:06:55 PM	Online(NAT)	<a href="#">Share</a>	<a href="#">Change</a>	<a href="#">Retrieve</a>	<a href="#">Access</a>
24.160.193.55	1/20/2017 2:50:01 PM	Offline	<a href="#">Share</a>	<a href="#">Change</a>	<a href="#">Retrieve</a>	<a href="#">Access</a>
1.164.52.172	1/19/2017 6:10:56 PM	Offline	<a href="#">Share</a>	<a href="#">Change</a>	<a href="#">Retrieve</a>	<a href="#">Access</a>

total | 1 / 1 | per page 10 ▾

Device Name: NVR308-32R

Share To: c02448

Valid Till: 2017-03-24 00:00:00

User Rights: **admin**  
admin  
default  
**Operator**

Description:

Confirm Back

Please specify a local user of the device. The person who you share device with has access to your device by that username. The default username is admin.

Live View Playback Setup

User

Add Modify Delete

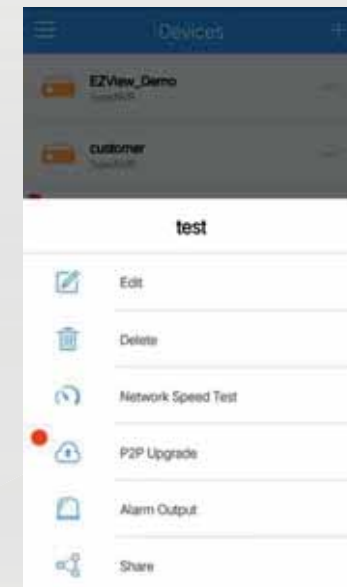
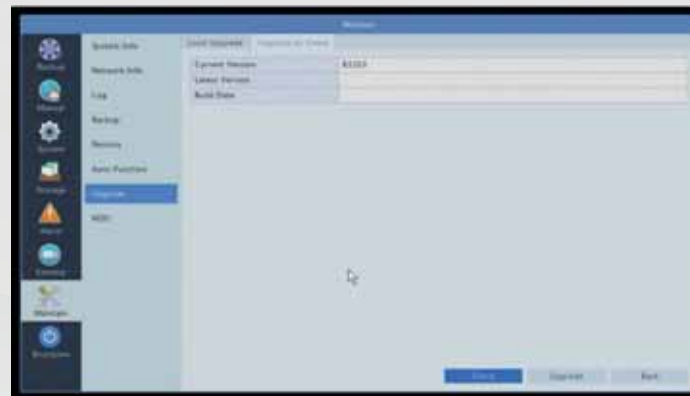
No.	Username	User Group
1	admin	Administrator
2	default	Reserved User
3	Operator	Operator



# Cloud update

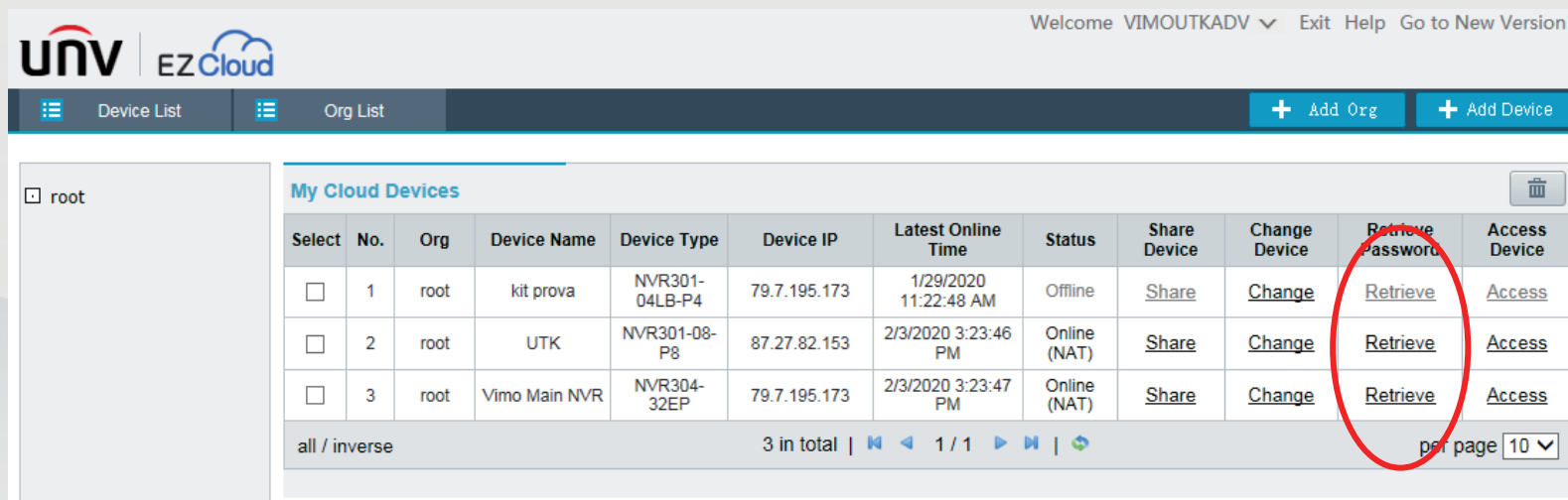
Ricerca di nuovi firmware disponibili tramite cloud da diverse piattaforme:

- Interfaccia web
- Interfaccia locale
- EZTools software
- EZView app



# Recupero password tramite Cloud

In caso di smarrimento della password se l'NVR è associato ad un account cloud l'utente finale ha la possibilità di recuperare la password in completa autonomia tramite interfaccia web. Questa verrà infatti inviata alla mail associata all'account.



The screenshot shows the UNV EZ Cloud management interface. At the top, there is a navigation bar with the UNV logo, 'EZ Cloud' branding, and user information: 'Welcome VIMOUTKADV', 'Exit', 'Help', and 'Go to New Version'. Below this is a secondary navigation bar with 'Device List' and 'Org List' tabs, and buttons for '+ Add Org' and '+ Add Device'. The main content area is titled 'My Cloud Devices' and contains a table with the following data:

Select	No.	Org	Device Name	Device Type	Device IP	Latest Online Time	Status	Share Device	Change Device	Retrieve Password	Access Device
<input type="checkbox"/>	1	root	kit prova	NVR301-04LB-P4	79.7.195.173	1/29/2020 11:22:48 AM	Offline	<a href="#">Share</a>	<a href="#">Change</a>	<a href="#">Retrieve</a>	<a href="#">Access</a>
<input type="checkbox"/>	2	root	UTK	NVR301-08-P8	87.27.82.153	2/3/2020 3:23:46 PM	Online (NAT)	<a href="#">Share</a>	<a href="#">Change</a>	<a href="#">Retrieve</a>	<a href="#">Access</a>
<input type="checkbox"/>	3	root	Vimo Main NVR	NVR304-32EP	79.7.195.173	2/3/2020 3:23:47 PM	Online (NAT)	<a href="#">Share</a>	<a href="#">Change</a>	<a href="#">Retrieve</a>	<a href="#">Access</a>

At the bottom of the table, there is a pagination bar showing 'all / inverse', '3 in total', and 'per page 10'. The 'Retrieve Password' column is circled in red in the original image.